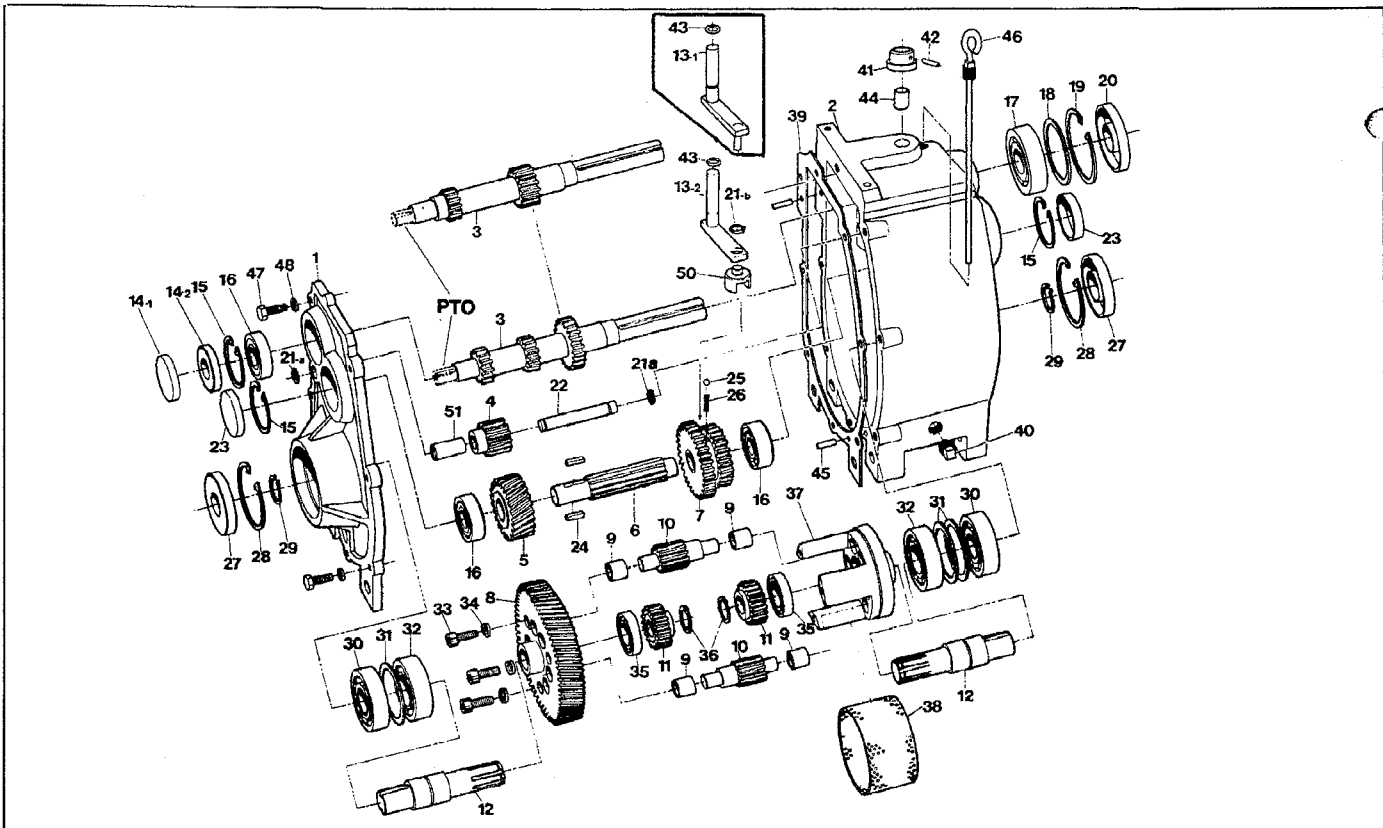


1.0 Transmission (All Models)



1.0 Transmission

Key No.	Part No.	emarks	Description	Qty.
1	3402		TRANSMISSION SIDE COVER, alum	1
1	34.49		TRANSMISSION SIDE COVER, alum	1
1	34-56		TRANSMISSION SIDE COVER, to trans. #11349; use with part #34-57 or #34-61 Housing only. If not available, replace cover & housing with part #34-66 Cover & #34-67 Housing.	1
1	34-66		TRANSMISSION SIDE COVER, from trans. #11350; use with part #34-67 Housing; has bosses for hydr. caliper mounting from trans. #12336 on.	1
2	34-01		TRANSMISSION HOUSING, alum.	1
2	34-48		TRANSMISSION HOUSING, alum.	1
2	34-57		TRANSMISSION HOUSING, to trans. #9687; use with part #34-56 Cover only. If not available, replace housing & cover with part #34-67 Housing & #34-66 Cover.	1
2	34-61		TRANSMISSION HOUSING, from trans. #9688 to #11349; use with part #34-56 Cover only. If not available, replace housing and cover with part #34-67 Housing & #34-66 Cover.	1
2	34-67		TRANSMISSION HOUSING, from trans. #11350; use with part #34-66 Cover; has bosses for hydr. caliper mounting from trans. #12336 on	1
3	3403		INPUT SHAFT, 15/22 T, dbl. spd - short, spur	1
3	34-35		INPUT SHAFT, 15/17 T, single spd - short, spur	1
3	34-39		INPUT SHAFT, 14/21 T. dbl. spd -short, spur	1
3	34-50	NA	INPUT SHAFT (discontinued - use part No. 34-80 if not available)	1
3	34-80	RO	INPUT SHAFT, 14/21 T, dbl spd-spur; no PTO on shaft; requires No. 14-1 Plug Plate.	1
3	34-27	NA	INPUT SHAFT (discontinued - use part No. 34-87 if not available)	1
3	3487	RO	INPUT SHAFT, 14/17 T, single spd. - spur; no PTO on shaft; requires key No. 14-1 Plug Plate	1
3	34-17	NA	INPUT SHAFT (discontinued - use part No. 34-21 if not available)	1
3	3421	RO	INPUT SHAFT, 13/21 T, dbl. spd. - spur; no PTO on shaft, requires key No. 14-1 Plug Plate	1
4	3407-A		REVERSE IDLER, 17 T- spur Incl. bushing 51	1
4	34-38-A		REVERSE IDLER, 16 T-, spur Incl. bushing 51	1
4	34-16-A		REVERSE IDLER, 13 T-, spur Incl. bushing 51	1
5	34-24		GEAR, 34 T, spur	1
5	34-40		GEAR, 26 T-, helical	1

Key No.	Part No.	emarks	Description	Qty.
5	34-44		GEAR, 21 T-, helical	1
6	34-04		SPLINE SHAFT, double speed	1
6	34-37		SPLINE SHAFT, single speed	1
7	34-06		DOUBLE GEAR, 45/38 T- spur	1
7	34-26		DOUBLE GEAR, 43/40 T-, spur	1
7	34-36		DOUBLE GEAR, 45/40 T-, spur	1
7	34-41		DOUBLE GEAR, 43/36 T-, spur	1
7	34-18		DOUBLE GEAR, 33/26 T-, spur	1
8	34-25		GEAR PLATE, 68 T- spur	1
8	34-43		GEAR PLATE, 71 T- helical	1
8	34-45		GEAR PLATE, 76 T-, helical	1
9		NA	BEARING, needle 3/4" lg, use part NO. 105-03 below	12
9	105-03		BEARING, Oilite bushin .34" lg; from Transmission No. 9128	12
10	34-12		PLANET GEAR, (Pinion), 12 T-, OD 1.142	6
10	34-13		PLANET GEAR, (Pinion), 12 T-, OD 1.130", stub	6
11	34-29		SUN GEAR, (Differential); 21 T-, OD 1.890"	2
11	34-14		SUN GEAR, (Differential), 21 T-, OD 1.880", stub	2
12	34-28X		OUTPUT SHAFT, short, (single sprkt)	2
12	34-28		OUTPUT SHAFT, short, (single sprkt)	2
12	3442		OUTPUT SHAFT, long, (dbl. sprkt)	2
13-1	34-34		SHIFTING ASSY, pin, .750" LG	1
13-1	34-52		SHIFTING ASSY, pin, .668" LG	1
13-1		NA	SHIFTING ASSY, pin, .893" lg; use key No. 13-2	1
13-2	3465		SHIFTING SUB-ASSY, use with key No. 50; production from Trans. No. 10431 but can be used on all "C" series transmissions	1
14-1	3107		PLUG PLATE, 18 GA. steel	1
14-2	102-06		OIL SEAL, 20 x 47 x 7 mm, use from Trans. Serial No. 3557-SS to 11327	1
15	10601		RETAINING RING, 2.054" OD, NAM 1300185	3
16	101-01		BEARING, 62042	3
17	101-16		BEARING, 6206	1
18	114-02		SHIM WASHER, 2-1/16 ID, 2-27/64 OD, 25 ga	1
19	106-05		RETAINING RING, 2.702" OD, NAM 1300244	1
20	102-05		OIL SEAL, 30 x 62 x 10 mm	1